

Blue print showing proposed location of station on mainland will be forwarded by mail.

5296

Picture Brides Land On a Fire Trap Island

Congress to Find Deplorable
Conditions at Pacific Immigrant
Station

18-1920

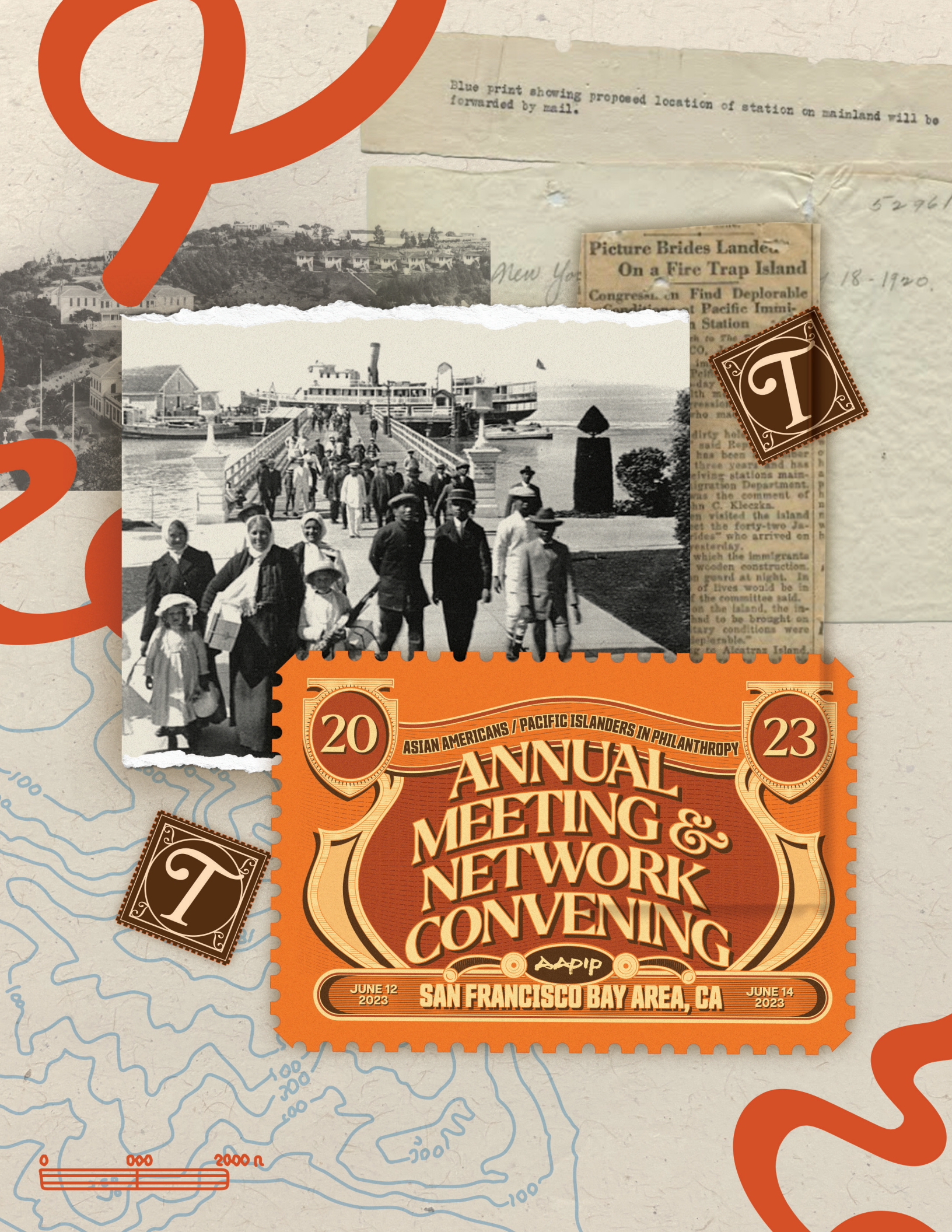


20 ASIAN AMERICANS / PACIFIC ISLANDERS IN PHILANTHROPY 23

ANNUAL MEETING & NETWORK CONVENING

AAPIP

JUNE 12 2023 SAN FRANCISCO BAY AREA, CA JUNE 14 2023



“There are tens of thousands of poems composed on these walls.

They are all cries of complaint and sadness,

The day I am rid of this prison and attain success,

I must remember that this chapter once existed...”

EXCERPT FROM POEM #31 BY ONE FROM XIANGSHAN

**ISLAND: POETRY AND HISTORY OF CHINESE IMMIGRANTS
ON ANGEL ISLAND 1910-1940**



Table of Contents

President and CEO's Welcome	04
Our Mission & Values	05
Tuesday, 6/13 Venue: Angel Island	06
Wednesday, 6/14 Venue: Palace SF Hotel	07
Convening Partners	08
Program Partners	09
Agenda-At-A-Glance	10
Detailed Program	11
Speaker Bios	16
AAPIP Leadership	22
Convening Sponsors	24
Health & Safety for an Inclusive Gathering	25
Support Local	26

President and CEO's Welcome

Welcome to this year's AAPIP network convening. A centerpiece for this year is a journey to Angel Island. It is a place of historic significance, marking early patterns around this country's discriminatory immigration policies, particularly for Asian immigrants, and setting the stage for immigration policies today.

A short ferry ride from San Francisco, it was originally a place for the Coastal Miwok people to fish and hunt. A treasure trove of poems carved deep into the walls of the immigration detention center "spoke out" on the brink of the building's demolition several decades ago to reclaim this important chapter in the nation's immigration story.

Our visit to Angel Island on Tuesday is the first journey of its kind in philanthropy, despite its proximity to some of the most prominent philanthropic institutions today. The Angel Island Immigration Station proudly celebrates its 40th anniversary this year, and our visit is timely in reconnecting this country's earliest immigration policies to current day issues of immigration and detention. It is a place for us to center the experiences of those who came before us as we ourselves experience this newer chapter of anti-Asian history. It is a time for us to build the future while visiting the past and grappling with the present.

Whether your family came to the U.S. through Angel Island, or your ancestors forcibly brought to these shores, or your peoples violently cleared from these lands, we honor the journey and sacrifices that each of our families made as we set our intentions forward.

On Wednesday, our convening continues at the Palace Hotel, whose history is in stark contrast to the

immigration station on Angel Island during the same period. There, we will begin with some reflections on the Angel Island learning journey and continue with current topics for philanthropy. We will preview the largest survey of AA and NH/PI organizations to date and engage in a robust discussion around power building within and across communities of color. And, we will end the convening with our celebratory Annual Meeting.

At a time when the expanding philanthropic sector is the most diverse, there is still little recognition of the role that Asian Americans, Native Hawaiians, and Pacific Islanders play and need to play in impactful racial equity strategies.

It is time to counteract historic underinvestment in our communities and organize ourselves to effect lasting change in the sector. This convening is an invitation to exchange deep reflections and conversations. We hope this space offers renewal as we organize ourselves toward greater collective good.

In Community,

Patricia Eng

PRESIDENT & CEO

Our Mission & Values

Established in 1990, Asian Americans/Pacific Islanders in Philanthropy (AAPIP) is a justice-minded national philanthropy serving organization that expands and mobilizes resources for AA and NH/PI communities. As a membership-based network, we serve as the progressive home to AA and NH/PIs in philanthropy at all leadership levels across the sector. AAPIP envisions a just and equitable democracy with the full civic and economic participation of Asian Americans, Native Hawaiians, and Pacific Islanders.

Our work is guided by key principles of:

▶ **RACIAL & ETHNIC SOLIDARITY**

We stand in solidarity with communities of color, within our ethnically diverse Asian, Native Hawaiian, and Pacific Islander roots and across all marginalized communities as allies in our shared quest for equity and justice

▶ **MULTI-GENERATIONAL**

We honor the voice, wisdom, and lived experience of every generation in our communities

▶ **CENTER THOSE MOST IMPACTED**

We believe the most effective solutions are designed by those who are most impacted by oppression and marginalization

Anchored by national staff, AAPIP's Chapter Network builds regional activism, bridging philanthropy and local non-profit organizations through information sharing, leadership development, community building and networking around AA and NH/PI issues and philanthropy. The chapter network is further bolstered by the National Giving Circle Network of individual giving circles that each contribute to and innovate philanthropy through collective giving, shared stories of community impact, and lessons learned from partnering with community.





TUESDAY, JUNE 13

Angel Island

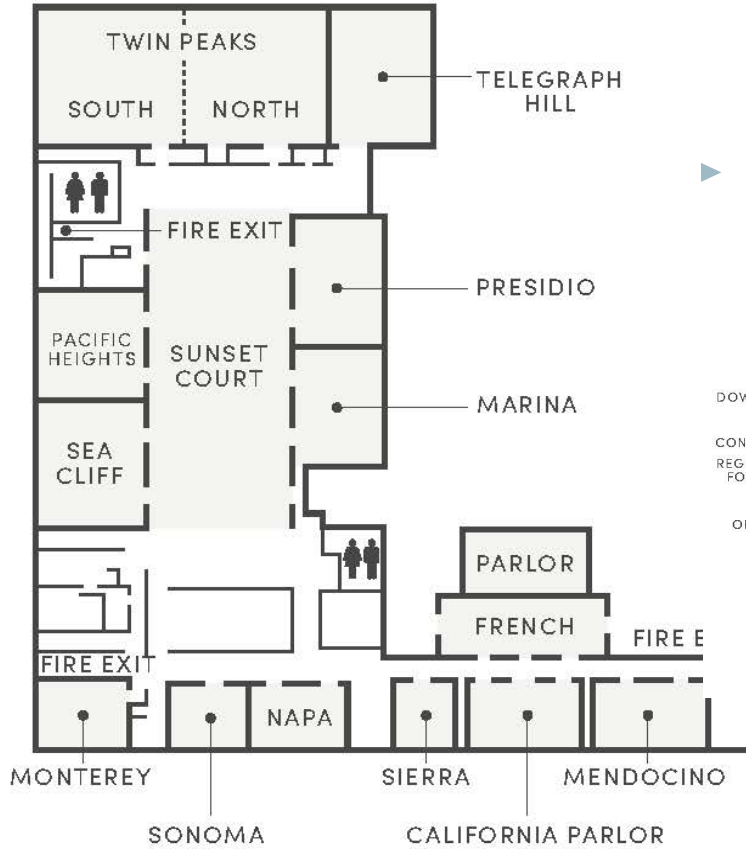
Angel Island is alive with history, tracing back to the coastal Miwok people for hunting and fishing.

It is the largest island in the San Francisco Bay, yet eclipsed by its sister, Alcatraz Island, with its storied history as a maximum security prison. Angel Island is often referred to as the “Ellis Island of the West”, yet their purposes and histories were quite different. Whereas Ellis Island welcomed more than 12 million (predominantly) European immigrants, Angel Island

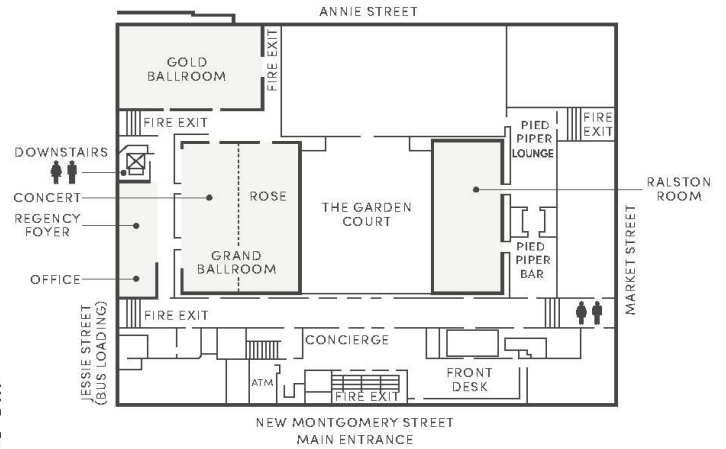
served largely to keep Asian immigrants out. From 1910-1940, the immigration station at Angel Island enforced the Page Act and the Chinese Exclusion Act, this country’s first immigration laws, paving the way for discriminatory policies ever since. It functioned largely as a detention center, even after its closing, when Angel Island served as a concentration camp site where Japanese Americans from Hawaii were incarcerated during WWII.

Carved deep in its walls are the documented memories of this earlier chapter of anti-Asian history, carried forward today as we contemplate and navigate issues of immigration, detention, and humanity.

▶ **SECOND LEVEL**



▶ **LOBBY LEVEL**



WEDNESDAY, JUNE 14

Palace SF Hotel

Originally established in 1875, the iconic Palace Hotel opened as the largest hotel in the world. It reopened in December 1909, after the 1905 earthquake, and just when the Angel Island Immigration Station was also being launched.

Woodrow Wilson gave speeches at the hotel's Garden Court, paving the way for the creation of the United Nations to develop friendly relations among nations and promote social progress, better living standards, and human rights, just at the height of Angel Island immigration detentions a few miles away. It still remains a landmark in San Francisco with timeless features like The Garden Court dining room's stained glass dome with Austrian crystal chandeliers and the 1909 Maxfield Parrish painting of "The Pied Piper of Hamelin" located in the Pied Piper Bar.

Convening Partners

Bay Area Host Committee

Hanh Cao Yu
Chief Learning Officer
THE CALIFORNIA ENDOWMENT

Sally Carlson
Managing Partner
CARLSON BECK
AAPIP BOARD MEMBER

James Head
*Social Justice Philanthropic
and Legal Senior Consultant*
AAPIP BOARD MEMBER

Phuong Quach
Senior Consultant
NPAG

Peggy Saika
Former AAPIP President & CEO

Jonathan Tran
Director of Activate CA
ASIAN AMERICAN FUTURES

Carolyn Wang Kong
President & Executive Director
ASIAN PACIFIC FUND

AAPIP San Francisco & Silicon Valley Chapter Co-Chairs

Meenakshi Abbi
Senior Manager, Sponsored Projects
ROCKEFELLER PHILANTHROPY ADVISORS

Paul Ocampo
Director of Development
AAAJ-ASIAN LAW CAUCUS

Grace Ha
Program Associate
SCHMIDT MARINE TECHNOLOGY PARTNERS

April Suwalsky Khan
Senior Manager, Education
CHAN ZUCKERBERG INITIATIVE

Tiffany Woon
Grants Manager
CLIMATE IMPERATIVE

Program Partners



Angel Island Immigration Station Foundation (AIISF)

▶ VISIT WWW.AIISF.ORG TO LEARN MORE

For all immigrants, descendants, and families, Angel Island is a living landmark that symbolizes diverse experiences of detention, racism, exclusion, hope, and determination. The Angel Island Immigration Station Foundation protects the historic site, elevates its stories, promotes learning, and celebrates the new beginnings and immigrant contributions that define the strength of the US. We inspire a more equitable and inclusive future; one that embodies how immigrants make nations better.



New Breath Foundation

▶ VISIT NEW-BREATH.ORG TO LEARN MORE

New Breath Foundation (NBF) mobilizes resources to support Asian American, Native Hawaiian, and Pacific Islanders (AA and NH/PIs) harmed by the unjust immigration and criminal justice systems to heal, keep families together, and build movements that shift narratives and policies. Established in 2017 and based in Oakland, CA, NBF grew out of the grassroots movements to prevent community violence, end mass incarceration, address immigration/ deportation issues, and advance racial justice and solidarity. NBF staff and board members have spent decades organizing around these issues, with expertise in community organizing, fundraising, non-profit governance, philanthropy, and leadership development.



AAPI Data

▶ VISIT WWW.AAPIDATA.COM TO LEARN MORE

AAPI Data is a nationally recognized publisher of demographic data and policy research on Asian Americans and Pacific Islanders, with hundreds of news mentions in national and local outlets. Its reputation is built on data and research that is accurate, compelling, and timely. In addition to their news impact, community organizations, government agencies, and decision makers regularly reach out to them, to better understand key aspects of AAPI communities.

Agenda at a Glance

Monday, June 12th

5:30-7:30PM

Evening Reception

INVITATION ONLY

Tuesday, June 13th Angel Island

8:00-8:45AM

Breakfast & Registration

Ferry Building (Pier 41)
(Gate B Picnic Tables)

1 FERRY BUILDING
SAN FRANCISCO, CA 94105

8:45AM

Boarding & Ferry
Departure to Angel Island

Ferry Building (Pier 41)
(Gate B Picnic Tables)

1 FERRY BUILDING
SAN FRANCISCO, CA 94105

10:00-10:30AM

Arrival & Scenic Trams Ride to
Angel Island Immigration Station
(AIIS)

10:30-11:00AM

Opening Ceremony

Angel Island Immigration Station
FOG BELL

11:00AM-12:00PM

Angel Island Learning Tours

Tuesday, June 13th (cont'd)

12:15-1:15PM

Lunch

1:30-2:45PM

Breakout Sessions

2:45-3:15PM

Walking the Grounds:
Reflect and Connect

3:15-3:45PM

Closing Remarks and
Group Photos!

Angel Island Immigration Station
FOG BELL

3:45PM

Board Trams for
Departure from AIIS

Angel Island Immigration Station
FOG BELL

4:30-5:00PM

Ferry Ride to SF Ferry Building

5:00PM

Ferry Returns to
SF Ferry Building

Ferry Building (Pier 41)
(Gate B Picnic Tables)

1 FERRY BUILDING
SAN FRANCISCO, CA 94105

Wednesday, June 14th Palace SF Hotel

Dinner On Your Own

Grab some AAPIP friends and go on an
adventure! Check out page 26 for local
recommendations!

8:00-9:00AM

Breakfast & Registration
TWIN PEAKS (2ND FLOOR)

**All of the following sessions will be
held in Twin Peaks (2nd Floor)*

9:00-10:00AM

Welcome & Art Performance

10:00-11:00AM

Panel Discussion:
The State of AA and NH/PI
Nonprofit Organizations

11:15AM-12:30PM

Moving Money for Justice:
A Cross-Racial Conversation
on Building Power in
Philanthropy

12:30-1:30PM

AAPIP Annual Luncheon &
Closing Remarks

2:00-5:00PM

Post-Convening Invitation-Only
Sessions

NOTE: Registrants who will be
participating in these invitation-only
sessions have been notified in advance.
Only those invited will be able to
participate.

Tuesday, June 13th Angel Island Learning Journey

Detailed Program

8:00 - 8:45 AM

Breakfast & Registration

*Ferry Building (Pier 41)
Gate B Picnic Tables*

1 FERRY BUILDING, SAN FRANCISCO, CA 94105

Our rendezvous point will be at the SF Ferry Building. AAPIP staff will be stationed at various points throughout the building to guide you - look for them in high-visibility attire. Light breakfast will be offered, and attendees are welcome to quickly grab coffee or tea from the Ferry Building shops before **gathering promptly by 8:45 am** to board the ferry as a full group.

NOTE: Convening participants trying to board the boat separately will not be honored by the Ferry service).

8:45 AM

Boarding & Ferry Departure to Angel Island

*Ferry Building (Pier 41)
Gate B Picnic Tables*

1 FERRY BUILDING, SAN FRANCISCO, CA 94105

We will congregate at the Pier 41 Docks Entrance on the far, North side of the building. Our entire group must board the ferry together - you must be with the group promptly at 8:45 am, or you'll miss the ferry and won't get to participate in all the adventures we have planned for the day!

10:00 - 10:30 AM

Arrival & Scenic Tram Ride to Angel Island Immigration Station (AIIS)

Once we arrive at Angel Island, please look closely for the open-air trams (Disneyland style) that will take us on a scenic drive to the immigration station grounds! Wahoo!

NOTE: The Immigration Station will be closed to other visitors, so please stay with the group to gain admission.

10:30 - 11:00 AM

Opening Ceremony

Angel Island Immigration Station FOG BELL

Our program will begin at the Fog Bell near the waterfront.

11:00 - 12:00 PM

Angel Island Learning Tours

Angel Island Immigration Museum (AIIM) **USIS HOSPITAL**
 USIS Detention Barracks **1ST FLOOR**
 USIS Detention Barracks **2ND FLOOR**
 WWII Mess Hall

After the opening ceremony, find the tour guide who corresponds with the color on your conference badge. This will be your guide for a shortened tour of the USIS Detention Barracks, WWII Mess Hall, and Angel Island Immigration Station. Please remain with your group for the duration of the tour; you'll have a chance to wander in the afternoon!

12:15 - 1:15 PM

Lunch

Picnic Tables **OUTSIDE USIS DETENTION BARRACKS**

During the tour, you may have noticed many inviting places to sit around the island. Find some AAPIP friends and feel free to bento together in the following areas:

AIIM USIS Hospital **1ST FLOOR**
 Any Outdoor Benches
 Fog Bell Benches
 USIS Detention Barracks **OUTDOOR STEPS ONLY**
 USIS Monument
 Word Steps **FORMER GROUNDS OF USIS ADMINISTRATION BUILDING**

1:30 - 2:45 PM

Breakout Session 1: Decriminalizing Trauma: Healing from Legacies of Gender Violence

*AIIM (USIS Hospital), Remembrance &
Reflection Room* **2ND FLOOR**

While the women's movement rightfully advocates for pay equity, and reproductive rights, and criminal justice reform efforts largely focused on men, the shattering impact of criminalizing, incarcerating, and deporting womxn of color largely remains invisible and overlooked. In the quiet of Angel Island, the women's barracks are long gone, but this session will center a conversation from philanthropic and nonprofit professionals reflecting on the very first law to ban entry

to the U.S. targeted Chinese women, setting the stage for immigration policies and detention practices that continue today. We will connect contemporary patterns illuminating systemic racism specifically targeting womxn of color, explore how prioritizing womxn in justice reform strategies bolsters the movement, and invite philanthropy to invest more deeply in this critical work.

SPEAKERS

Ny Nourn SURVIVED & PUNISHED, ORGANIZER ASIAN PRISONER SUPPORT COMMITTEE, CO-DIRECTOR

Danielle Wetmore ANGEL ISLAND IMMIGRATION STATION FOUNDATION, PROGRAM MANAGER

Patricia Eng AAPIP, PRESIDENT & CEO

1:30 - 2:45 PM

Breakout Session 2: Locked Out of Philanthropy: Restoring AA and NH/PI Communities

USIS Detention Barracks **1ST FLOOR**

Over a century ago, Angel Island was established to detain, interrogate, and deport as many Asian Americans as possible. The institutionalization of xenophobia and inhumane practices persist today and are still seen at the U.S.'s southern border. However, there remains little awareness of how the carceral system targets Asian Americans, Native Hawaiians, and Pacific Islanders. This session will examine the state of the modern carceral system, including the school to deportation pipeline threatening AA and NH/PI youth and families. We will hear from field experts who are already reimagining a world of restorative justice and collectivism, and are calling on philanthropy to actively invest in a future rooted in reparative action.

SPEAKERS

Anoop Prasad ASIAN PRISONER SUPPORT COMMITTEE, ADVOCACY DIRECTOR & STAFF ATTORNEY

Edward Tepporn ANGEL ISLAND IMMIGRATION STATION FOUNDATION, EXECUTIVE DIRECTOR

 The following three breakout options are concurrent sessions.

1:30 - 2:45 PM 

Breakout Session 3: Reckoning with the Past, Healing the Future

WWII Mess Hall

The most powerful racial justice changemakers in philanthropy understand the importance of reckoning with their legacies of wealth accumulation to chart a path where healing is possible. On the individual level, breaking cycles of intergenerational trauma often begins by looking back in time - where the trauma originated. In this interactive workshop facilitated by genealogist and family historian, Grant Din, attendees will explore examples of Asian Americans who have charted a path of generational healing in the process of uncovering their family histories and gain tools and resources to begin their own process of uncovering and rewriting their family history.

SPEAKER

Grant Din GENEALOGIST AND RESOURCE DEVELOPER

2:45 - 3:15 PM

Walking the Grounds: Reflect and Connect

After the breakout sessions conclude, you are welcome to explore these spaces, the Angel Island Immigration Museum, and the designated outdoor areas at your own pace. You may browse the exhibits inside the museum, remain in the USIS Detention Barracks or WWII Mess hall for deeper personal reflection, or get some fresh air with community. This time is yours (and also the best time to find a bathroom)!

AIIM (USIS HOSPITAL)
ANY OUTDOOR BENCHES
OUTDOOR EXHIBITS
USIS DETENTION BARRACKS
WWII MESS HALL

3:15 - 3:45 PM

Closing Remarks and Group Photos!

Angel Island Immigration Station FOG BELL

After a powerful day, we will gather again at the Fog Bell for our closing ceremony and a group photo before boarding the trams back to the ferry docks.

3:45 PM

Board Trams for Departure from AIIS

Angel Island Immigration Station FOG BELL

Say farewell to Angel Island! We're headed back to the ferry building.

4:30 - 5:00 PM

Ferry Ride to SF Ferry Building

Land ho! And we're back...

5:00 PM

Ferry Returns to SF Ferry Building

*Ferry Building (Pier 41)
Gate B Picnic Tables*

1 FERRY BUILDING, SAN FRANCISCO, CA 94105

DINNER ON YOUR OWN

Grab some AAPIP friends and go on an adventure!
Check out page 26 for local recommendations!

The following three breakout options are concurrent sessions. 

Detailed Program

Wednesday, June 14th
AAPIP Annual Meeting &
Network Convening
Palace SF Hotel

8:00 - 9:00 AM

Breakfast & Registration

Twin Peaks 2ND FLOOR

Good morning, AAPIPers! Join us for breakfast on the second floor, outside of Twin Peaks and Telegraph Hill. Escalators can be found on the first floor in the left-wing (left of The Garden Court), near the Jessie Street entrance.

9:00 - 10:00 AM

Welcome & Art Performance

Twin Peaks 2ND FLOOR

Featuring a Poetry Reading by Genny Lim

Genny Lim is a second generation Chinese American born and raised in San Francisco. She served as the San Francisco Jazz Poet Laureate from 2016-2018. Lim was awarded the Reginald Lockett Lifetime Achievement Award from PEN OAKLAND in 2021 and the Lifetime Achievement Award from the City of Berkeley at the Berkeley Poetry Festival in 2022. Lim currently teaches the Senior Asian American Writers Class at the Japanese Cultural and Community Center of Northern California in San Francisco. More information about Genny Lim can be found at gennylim.ddns.net.

10:00 - 11:00 AM

Panel Discussion: The State of AA and NH/PI Nonprofit Organizations

Twin Peaks 2ND FLOOR

This panel discussion will begin with a presentation on the latest and largest landscape analysis of Asian American and Native Hawaiian/Pacific Islander nonprofit organizations to date, analyzing the impacts of the pandemic on the AA and NH/PI nonprofit ecosystem. How have these community-serving organizations fared financially over the last few years? How have these organizations adapted and responded to community needs? Our panelists will also weigh in on the outlook for AA and NH/PI nonprofits, including what nonprofits are paying attention to, and how philanthropy can support this work.

SPEAKERS

Geraldine Alcid FILIPINO ADVOCATES FOR JUSTICE, EXECUTIVE DIRECTOR

Karthick Ramakrishnan AAPI DATA, PRESIDENT & FOUNDER

Patsy M. Tito SAMOAN COMMUNITY DEVELOPMENT CENTER, EXECUTIVE DIRECTOR

Yuan Wang LAVENDER PHOENIX, EXECUTIVE DIRECTOR

Carolyn Wang Kong ASIAN PACIFIC FUND, EXECUTIVE DIRECTOR

MODERATOR

Fontane Lo AAPI DATA, DEPUTY DIRECTOR

11:15 - 12:30 PM

Moving Money for Justice: A Cross-Racial Conversation on Building Power in Philanthropy

Twin Peaks 2ND FLOOR

This era of racial reckoning has ushered in a new moment in philanthropy. Signaling a beginning nod to the decades of underinvestment in organizations led by and for communities of color and some baby steps toward examining the historic roots of the chasmic wealth divide across color lines, a number of high profile announcements of more sizeable investments to our communities over the past few years brings some hope toward a transformational moment in philanthropy.

Building on this momentum, what is the intersectional power? There is a long but often hidden history of cross-racial solidarity between Asian American, Black, Latinx, and Indigenous communities although much public attention tends to lean into tensions in between. This panel brings together leaders from California based funds focused on building power within communities of color that lead the charge for change. We will explore the successes, the pitfalls, and importantly, the potential for cross-racial solidarity when identity-based funds come together for even greater impact.

SPEAKERS

Dana Arviso NATIVE VOICES RISING,
SENIOR PROGRAM STRATEGIST

Marcela Muniz LATINO COMMUNITY FOUNDATION,
VICE PRESIDENT OF PHILANTHROPY

Marc Philpart CALIFORNIA BLACK FREEDOM FUND,
EXECUTIVE DIRECTOR

Eddy Zheng NEW BREATH FOUNDATION,
PRESIDENT & FOUNDER

MODERATOR

Doua Thor SOBRATO PHILANTHROPIES, VICE PRESIDENT
STRATEGY & INFLUENCE, AAPIP BOARD MEMBER

12:30 - 1:30 PM

AAPIP Annual Luncheon & Closing Remarks

Twin Peaks 2ND FLOOR

AAPIP's annual membership luncheon will close out this unique convening with announcements and a surprise performance.

2:00 - 5:00 PM

Post-Convening

*Invitation-Only Sessions**

*These sessions are separate from the convening and are not open to all convening participants unless you received a specific invitation:

CEOS/TRUSTEES

Pacific Heights 2ND FLOOR

AA AND NH/PI FUNDS

Twin Peaks 2ND FLOOR

CA GIVING CIRCLES

Telegraph Hill 2ND FLOOR
(NEXT DOOR TO TWIN PEAKS)

Meet Your Speakers

TUESDAY, JUNE 13TH



Grant Din

Genealogist & Resource Developer

Grant Din has been working with nonprofit organizations and in genealogical research for 40 years. As former AIIASF and Asian Neighborhood Design staff, Grant was co-curator for *Taken From Their Families*, an exhibit about Japanese immigrant detention on Angel Island during WWII (seen in the historic Mess Hall), and part of the research team for the film *The Six* about the Chinese seamen who survived the Titanic.



Anoop Prasad

Advocacy Director & Staff Attorney

ASIAN PRISONER SUPPORT COMMITTEE (APSC)

Anoop Prasad is the Advocacy Director and Staff Attorney at Asian Prisoner Support Committee. Anoop has spent the past two decades representing and working with people in jails, prisons, and detention centers facing deportation. At APSC, Anoop works on advocacy and providing direct legal services to bring people home, end deportations, and build community power.

Ny Nourn

Organizer, SURVIVED & PUNISHED

Co-Director, ASIAN PRISONER SUPPORT COMMITTEE

Ny Nourn (she/her) is an experienced anti-deportation organizer and strategist. Criminalized as a domestic violence survivor, Ny was detained by ICE after serving 16 years in state prison. From community advocacy and her leadership, Ny was freed in 2017 and received a gubernatorial pardon in 2020, preventing her deportation to Cambodia. Ny is a member of the California Coalition for Women Prisoners.



Edward Tepporn

Executive Director

ANGEL ISLAND IMMIGRATION STATION FOUNDATION

Edward has 26+ years of experience in nonprofits. He previously served as the Executive VP at APIA Health Forum, overseeing multi-million dollar programs, functioning as chief strategy officer, was key liaison to a Kellogg-funded national racial equity collaborative, and secured \$32+ million in funding. Ed has been awarded a Robert Wood Johnson Foundation (RWJF) Award for Health Equity and was an RWJF Culture of Health Fellow.



Danielle Wetmore

Program Manager

ANGEL ISLAND IMMIGRATION STATION FOUNDATION

Danielle joined AIISF in May 2022 with a strong background in public history, education, and museum interpretation. With roots in the Bay Area, she spent the last 10 years in NYC earning her MA in American Studies from the City University of New York (CUNY) Graduate Center and working at the Tenement Museum on Manhattan's Lower East Side.



Meet Your Speakers

WEDNESDAY, JUNE 14TH



Geraldine Alcid

Executive Director

FILIPINO ADVOCATES FOR JUSTICE (FAJ)

Geraldine Alcid leads FAJ's mission to build an empowered Filipino community through organizing, leadership, direct services, and justice advocacy, established in response to the alienation faced by the influx of Filipino immigrant newcomers. Geraldine was born in Makati, Philippines and grew up in Chicago, IL. She graduated from UC Berkeley and the College of Ethnic Studies at San Francisco State University.



Dana Arviso

Senior Program Strategist

NATIVE VOICES RISING

Dana Arviso has spent a decade working, later leading as Executive Director, for Potlatch Fund. Dana is an enrolled member of the Navajo Nation and grew up on the Bishop Paiute-Shoshone Indian Reservation in California. She earned her Bachelor's in Child Development from California State University - Sacramento and worked as an early childhood educator within her tribe's family literacy program on her reservation.

Marcela Muniz

Vice President of Philanthropy

LATINO COMMUNITY FOUNDATION (LCF)

Dr. Marcela Muñoz leads fund development efforts to fulfill the LCF's philanthropic aspirations, including strategic leadership for their Latino Power Fund. Previously, Marcela served as Regional Director of Capital Giving for Harvard University and Assistant Dean of Admission at Stanford University. She graduated from Stanford University with a BA in Sociology and Spanish, MA in Sociology, and PhD in Education.



Marc Philpart

Executive Director

CALIFORNIA BLACK FREEDOM FUND

Marc Philpart brings 10+ years of leadership in grassroots organizing to build power. He formerly led the Alliance for Boys and Men of Color, successfully advancing state policies with California Funders for Boys and Men of Color and other partners. Marc is a board and advisory member with the California Immigrant Policy Center, Partners for Dignity and Rights, and USC's Equity Research Institute.



Karthick Ramakrishnan

President & Founder

AAPI DATA

Karthick Ramakrishnan created AAPI Data and is co-founder of California 100. He chairs the California Commission on APIA Affairs and serves on the board of The California Endowment and the U.S. Census Bureau's National Advisory Committee. Karthick also founded the Center for Social Innovation at UC Riverside and the Journal of Race, Ethnicity, and Politics, an official section journal of the American Political Science Association.



Meet Your Speakers

WEDNESDAY, JUNE 14TH



Patsy M. Tito

Executive Director

SAMOAN COMMUNITY DEVELOPMENT CENTER

Patsy is the Executive Director of Samoan Community Development Center (SCDC), the only funded organization in San Francisco that serves Samoans and other Pacific Islanders. SCDC was developed in 1991 to support Samoan community and Pacific Islanders who migrated to the US. Over the past 25 years, SCDC offers programs for youth and family case management, mental health advocacy, and cultural education and awareness.



Yuan Wang

Executive Director

LAVENDER PHOENIX

Yuan Wang (she/they) is building transgender, non-binary, and queer API power in the Bay Area. Yuan is a transgender, non-binary Chinese-American organizer born on Ohlone land in CA, raised on Lenape land in NJ. Yuan was shaped by organizing in NYC with CAAAV, Laundry Workers Center, and the Sex Worker's Project. Her Lavender Phoenix community reminds her daily to lead with care and vulnerability.

Carolyn Wang Kong

President & Executive Director

ASIAN PACIFIC FUND (APF)

Carolyn Wang Kong leads APF in working closely with community partners and funders to increase resources that strengthen the Bay Area's AA and NH/PI communities. Previously, Carolyn was the Chief Program Director at Blue Shield of California Foundation. Carolyn held a career in language access and is nationally recognized for building Kaiser Northern California's language access program.



Eddy Zheng

President & Founder

NEW BREATH FOUNDATION (NBF)

Eddy Zheng founded NBF to mobilize resources for AA and NH/PIs harmed by violence and the unjust criminal justice systems. Eddy is the subject of the award-winning documentary "Breathin': The Eddy Zheng Story", a TEDx Speaker, and contributor to Contemporary Asian American Activism: Building Movements for Liberation. Eddy is eager to collaborate with new partners in empowering cross-cultural healing and global racial solidarity.



AAPIP Leadership

Staff

Patricia Eng
PRESIDENT & CEO

Kyla Alvarez
SENIOR MANAGER OF
MEMBERSHIP & OPERATIONS

Jill Beharry
DIRECTOR OF FINANCE &
ADMINISTRATION

Courtney Chappell
VICE PRESIDENT OF
MEMBERSHIP PROGRAMS

Megan Duong
CALIFORNIA REGIONAL
COORDINATOR

Brandon Hadi
DIRECTOR OF PROGRAMS

Samanta Ratsavong
SENIOR COORDINATOR OF
MEMBERSHIP PROGRAMS

Victoria Yam
SENIOR EXECUTIVE ASSISTANT

2022–2023 Board of Directors

BOARD CHAIR

Vivian Tseng
PRESIDENT & CEO
Foundation for Child Development

BOARD VICE CHAIR

Perry Chen
DIRECTOR OF SOCIAL IMPACT
Blue Shield of California

BOARD TREASURER

John Kim
CHIEF ADMINISTRATIVE OFFICER
The Annie E. Casey Foundation

BOARD SECRETARY

Priscilla Enriquez
CEO
The James B. McClatchy Foundation

Paurvi Bhatt
FOUNDER & CEO
ThirdEyeFocus

Sally Carlson
MANAGING PARTNER
Carlson Beck, LLC

Don Chen
PRESIDENT
Surdna Foundation

Cathy Choi
SENIOR DIRECTOR OF PROGRAMS
The Eisner Foundation

Tanuja Dehne
PRESIDENT & CEO
Geraldine R. Dodge Foundation

James Head
SOCIAL JUSTICE PHILANTHROPIC AND
LEGAL SENIOR CONSULTANT

Michelle Ka'uhane
SENIOR VICE PRESIDENT
Community Grants and Initiatives, Hawaii
Community Foundation and WHIAANHPI
Commissioner

Doua Thor
VICE PRESIDENT,
STRATEGY & INFLUENCE
Sobrato Philanthropies

Rochelle Witharana
CHIEF FINANCIAL OFFICER
The California Wellness Foundation

2022-2023 Chapter Leaders

BOSTON

Hehershe Busuego

PROGRAM OFFICER

Essex County Community Foundation

CHICAGO

Sonia Mathew

SENIOR PROGRAM OFFICER

Robert R. McCormick Foundation

LOS ANGELES

Clara Chiu

SENIOR PHILANTHROPIC ADVISOR

AARP Foundation

Warren Fong

SENIOR PROGRAM OFFICER

Jewish Community Foundation
of Los Angeles

Derek Oye

PROGRAM OFFICER

Rose Hills Foundation

METRO DC

Rosie Abriam

CHIEF OPERATING OFFICER

The Leader Project

Hanh Le

CO-CHIEF EXECUTIVE OFFICER

if, A Foundation for Radical Possibility

MINNESOTA

Amal Karim

SENIOR IMPACT OFFICER

Constellation Fund

Tenzin Nordon

PROGRAM OFFICER

GHR Foundation

Joshua Vang

MEMBER SERVICES MANAGER

Minnesota Council on Foundations

Tiffany Xiong

ADVANCEMENT DIRECTOR

Constellation Fund

NEW YORK

Daniel Maiuri

PROGRAM MANAGER

Arcus Foundation

Julia Yang-Winkenbach

US PROGRAM OFFICER

Unbound Philanthropy

PHILADELPHIA

James Liou

SENIOR DIRECTOR

Equal Measure

ROCKY MOUNTAIN

Chris Bui

SENIOR PROGRAM OFFICER

Colorado Health Foundation

SAN FRANCISCO BAY AREA

Meenakshi Abbi

SENIOR MANAGER, SPONSORED
PROJECTS

Rockefeller Philanthropy Advisors

Paul Ocampo

DIRECTOR OF DEVELOPMENT

AAAJ-Asian Law Caucus

SEATTLE

Juliet Le

PROGRAM MANAGER

Satterberg Foundation

Olivia Thai

PROGRAM OFFICER

Vulcan/Paul G. Allen Family Foundation

SILICON VALLEY

Grace Ha

PROGRAM ASSOCIATE, SCHMIDT

Marine Technology Partners

April Suwalsky Khan

SENIOR MANAGER, EDUCATION

Chan Zuckerberg Initiative

Tiffany Woon

GRANTS MANAGER

Climate Imperative

Convening Sponsors

TITLE SPONSORS



PRESENTING SPONSORS



EVENT SPONSORS



SUPPORTERS



Health & Safety for an Inclusive Gathering

COVID-19 HEALTH & SAFETY We are committed to providing you with a safe convening experience that aligns with ongoing efforts to mitigate the risk of COVID-19 spread. We will actively monitor and evolve our solutions to ensure a continued focus on the health and safety for everyone. To help alleviate the risk of COVID-19 transmission, venues will use signage where appropriate to remind guests of updated protocols to adhere with public health guidance.

ACCESSIBILITY AAPIP is committed to providing accommodations where possible with advance notice. Should you require assistance or accommodations for this event, please see a staff member.

Community Agreements

MASKING RECOMMENDATIONS In accordance with the CDC, public health authorities, and our venue locations, all attendees are highly encouraged to wear face masks when indoors and in crowded spaces. Attendees are welcome to mask as they are comfortable when outdoors, and when requested by offsite hosts. N95, KN94, or N95 masks are recommended for COVID protection. AAPIP will have extra masks throughout the convening in case you need one.

COVID-19 TESTING Please do not attend session gatherings if you experience upper respiratory infection symptoms such as sore throat, nasal congestion, cough, fever, and/or chills, even if you test negative for COVID-19, as these symptoms may warn other illnesses. AAPIP will have a limited supply of COVID-19 antigen test kits by request for anyone who would like to test throughout our convening as a further precaution.

CONFIRM CONSENT Please continue mindfulness of everyone's comfortability when reconnecting with friends. Remember to ask about physical contact (i.e. hugs and handshakes) and respect the comfort level of your colleagues.

LISTEN TO YOUR BODY We welcome you to take breaks as needed throughout the convening - quietly step away, rehydrate, stretch your legs, and/or go for a brief walk. On Tuesday, we will have water bottles for you while on Angel Island. On Wednesday, we will have water, tea, and coffee available for when your body calls for it.

ENGAGE COMPASSION Immerse yourself in the spirit of togetherness! Activate your curiosity. Turn to wonder. Support each other. Navigate gently if you find yourself and colleagues grappling with the extension of settler colonialism, institutional harm, and other individualized realities.

Support Local

Whether local to San Francisco or a guest to the city, we invite you to explore and support the thriving AA and NH/PI business community in the Bay!

The Bay Area Rapid Transit (BART) (nearest station to Palace Hotel: Market St. & New Montgomery St.) and streetcars (MUNI) stop directly in front of the Palace and make it easy to adventure solo or with fellow AAPIers! This list is just meant to get you started on your own adventure!

Please note this list is ordered by approximate distance from the Palace Hotel.

SHOPPING, ARTS & CULTURE

Asian Art Museum / 200 LARKIN ST / CIVIC CENTER

Kinokuniya Bookstore / 1581 WEBSTER STREET / SF JAPANTOWN

The Wok Shop / 718 GRANT AVE / SF CHINATOWN

post.script. / 2413 CALIFORNIA ST / LOWER PACIFIC HEIGHTS

Therapy Stores / MULTIPLE LOCATIONS

Arkipelago Books / SUPPORT THEM ONLINE!

EastWinds Book Store / SUPPORT THEM ONLINE!

DINING & BEVERAGES

Amber India Restaurant / 25 YERBA BUENA LN / UNION SQUARE

Lao Table / 149 2ND STREET / SOMA

Socola Chocolatier / 535 FOLSOM ST. / SOMA

HK Lounge Bistro / 1136 FOLSOM STREET / SOMA

North India / 123 2ND ST / SOMA

Mau Restaurant / 180 SPEAR ST / FIDI

Wong Lee Bakery / 732 JACKSON ST / SF CHINATOWN

Pa'ina Restaurant & Lounge / 1865 POST ST. / SF JAPANTOWN

Yarsa Nepalese Cuisine / 1310 GRANT AVE / TELEGRAPH HILL

House of Thai / 901 LARKIN ST / CIVIC CENTER

Han Il Kwan / 1802 BALBOA ST / RICHMOND

Joe's Ice Cream / 5420 GEARY BLVD / RICHMOND

Garden Creamery / 3566 20TH ST / MISSION

Prubechu / 2224 MISSION ST / MISSION

Den Sake Brewery / 2311 MAGNOLIA ST / OAKLAND

FOB Kitchen / 5179 TELEGRAPH AVE / OAKLAND

Dokkaebier / 420 3RD ST, UNIT A / OAKLAND

LANDMARKS

National Japanese American Historical Society
/ 1684 POST STREET / SF JAPANTOWN

Chinese Culture Center San Francisco
/ 750 KEARNY ST, 3RD FL / SF CHINATOWN

Presidio SF
/ 1750 LINCOLN BOULEVARD / GOLDEN GATE STATE PARK

Japanese Tea Garden
/ 75 HAGIWARA TEA GARDEN DR / GOLDEN GATE STATE PARK

“Angel Island is so critical to who we can be as a nation because only in telling the truth about our past and honoring those ancestors, not just for what they suffered, but how they survived, can we find the courage and wisdom to hold up a vision of a future that leaves no one behind.”

– VALARIE KAUR

Valarie Kaur is a civil rights activist, lawyer, filmmaker, innovator, founder of the Revolutionary Love Project. She has won national acclaim for her work in social justice on issues ranging from hate crimes to digital freedom. Her speeches have reached millions worldwide and inspired a movement to reclaim love as a force for justice. A daughter of Sikh farmers in California, she earned degrees from Stanford University, Harvard Divinity School, and Yale Law School and holds an honorary doctorate from the California Institute of Integral Studies. She lives in a multigenerational home in Los Angeles with her husband, son, and daughter. You can learn more about Valarie’s work at valariekaur.com.



Building Democratic
Philanthropy

ASIAN AMERICANS / PACIFIC ISLANDERS IN PHILANTHROPY

Annual Meeting & Network Convening. San Francisco Bay Area, CA. June 12-14, 2023